

Web Design For Educators

Dreamweaver Tutorial

The Dreamweaver Interface

Document toolbar

Panel Groups

Insert bar

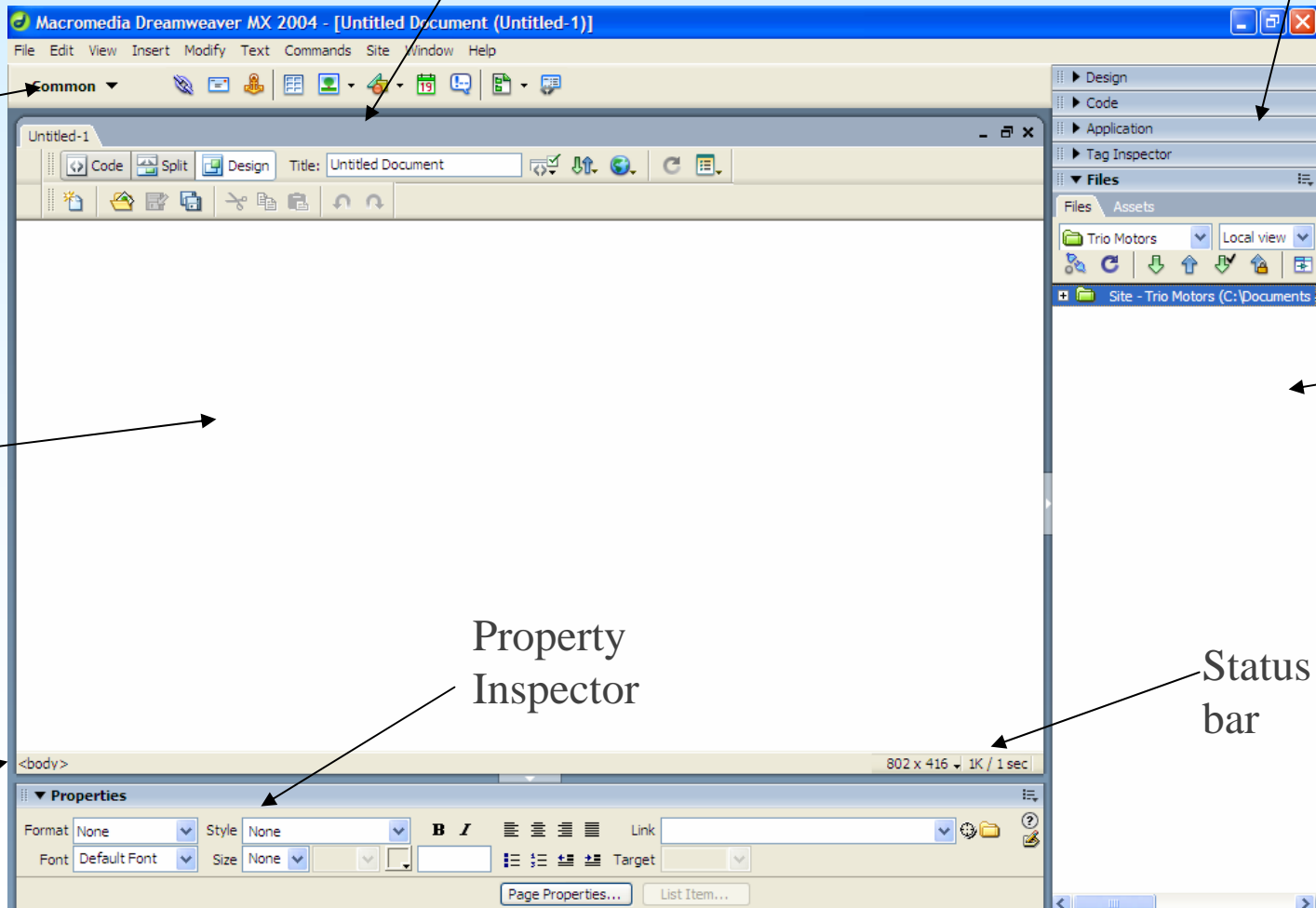
Document window

Files Panel

Tag Selector

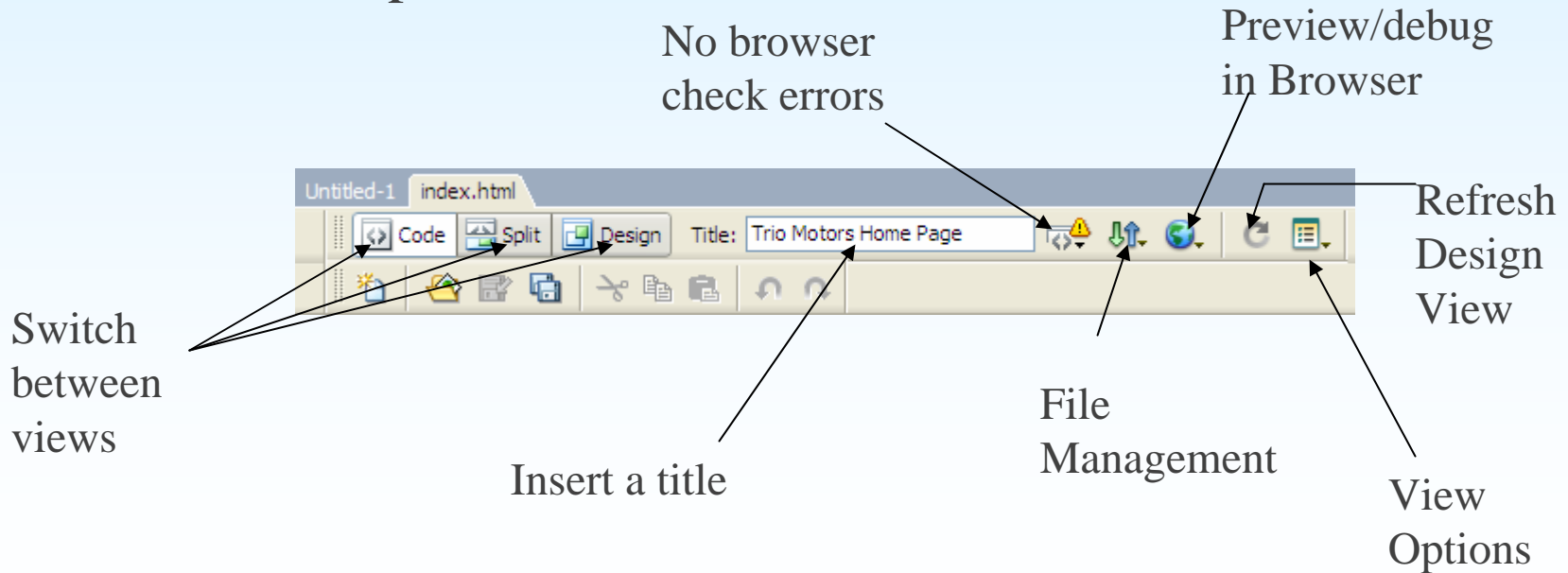
Property Inspector

Status bar



Document Toolbar

- The document window is your main workspace
- The document toolbar lets you switch between design, code or split modes

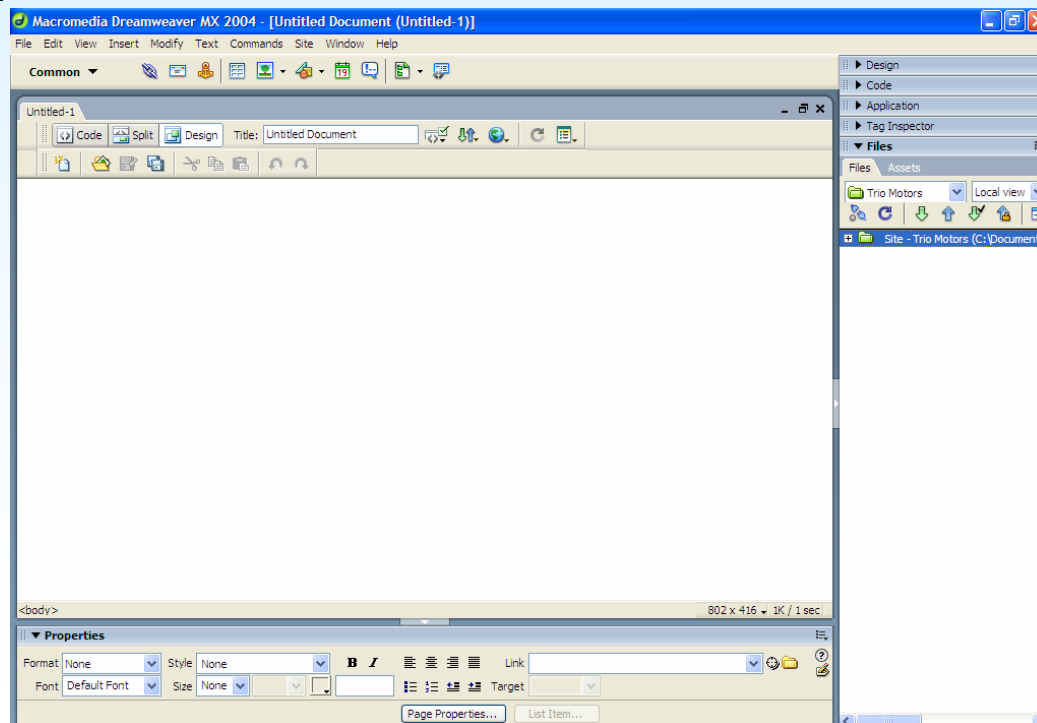


Document Toolbar cont..

- **Title** - specify a title, which appears in the title bar of the browser
- **No Browser/Check Errors** - options for checking browser compatibility
- **File Management** - upload page to a server
- **Preview/Debug in Browser** - preview the page in a browser
- **Refresh Design View** - Refreshes the appearance of Design view after you made changes in Code view.
- **View Options** - specify various settings for the current view.

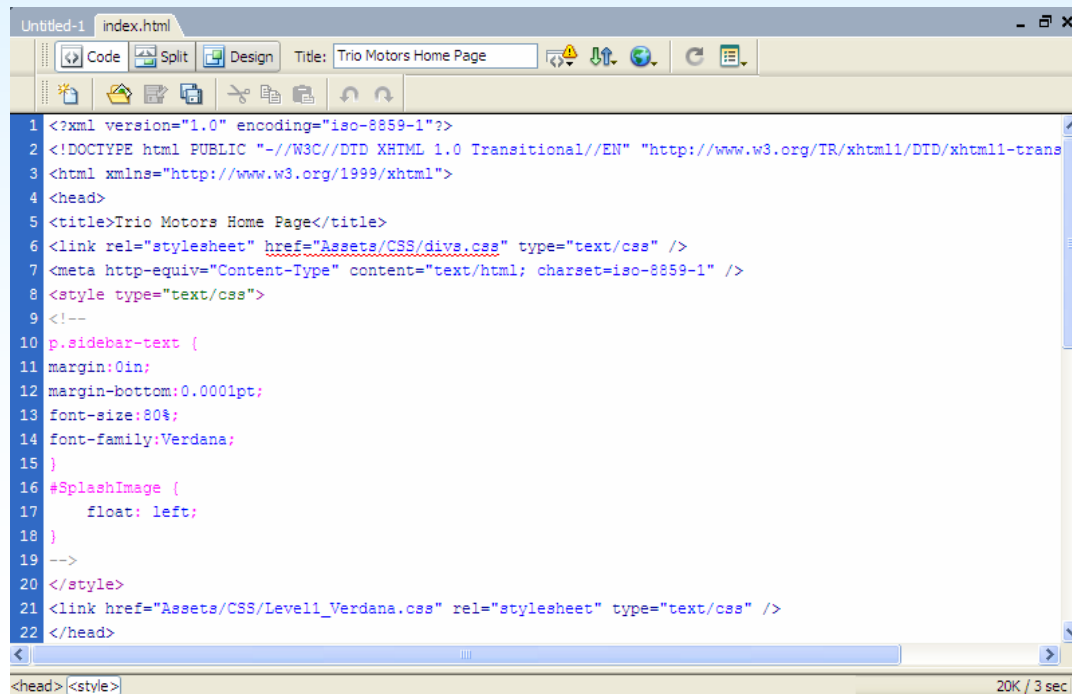
Design View

- Type and insert graphics as you would in a word processor



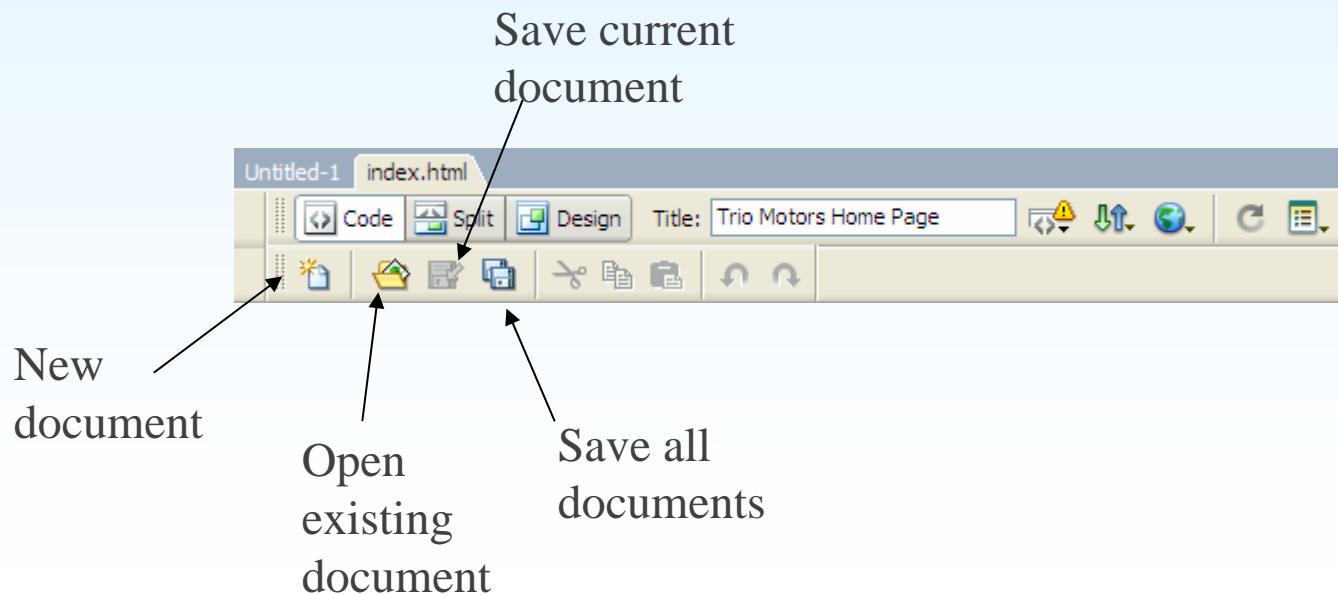
Code View

- In code view, you can add/edit the HTML code or add other codes such as Java scripts

A screenshot of a web editor window titled 'Untitled-1 index.html'. The window has a menu bar with 'Code', 'Split', and 'Design' options. The title bar shows 'Title: Trio Motors Home Page'. The main area displays HTML code in a code editor. The code includes XML declarations, DOCTYPE, HTML namespace, head section with title, link, meta, and style tags, and CSS rules for 'p.sidebar-text' and '#SplashImage'. The status bar at the bottom shows '<head><style>' and '20K / 3 sec'.

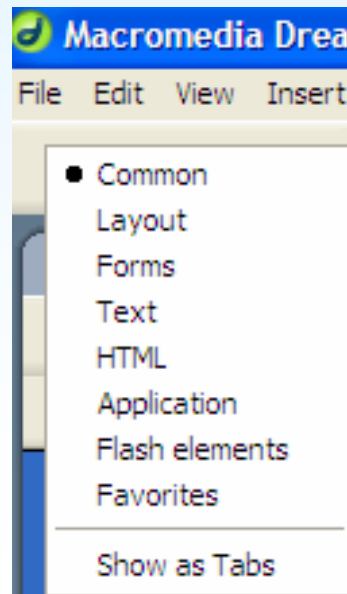
Standard Toolbar

- To make the Standard toolbar visible on your screen click **Select View | Menu |**



Insert Bar

- The insert bar lets you add different elements to your page. Click the drop down arrow to see the categories available

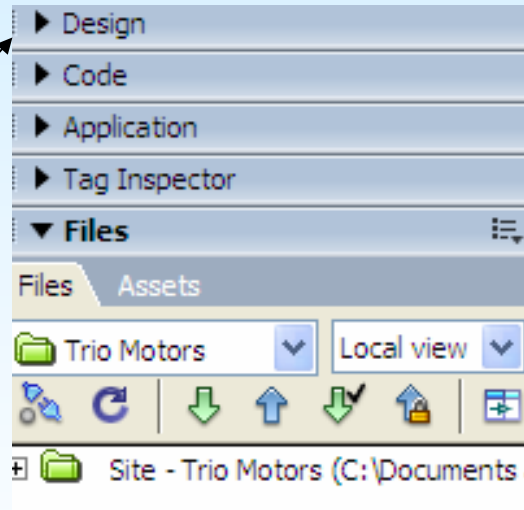


Insert Bar cont...

- **Common** – add hyperlinks, tables, images, and multimedia objects.
- **Layout** - commands for tables, layers, and framesets.
- **Forms** - add form elements to your page.
- **Text** – apply formatting to text
- **HTML** - select various HTML tags to insert into your page.
- **Application** - adds database elements to your page.
- **Flash Elements** – Insert a Macromedia Flash movie
- **Favorites** - customize your toolbar

Panel Groups

To expand a panel group click the arrow



Select to reveal options for the panel